

Difficulty Rating
Note de difficulté
Calificación de dificultad



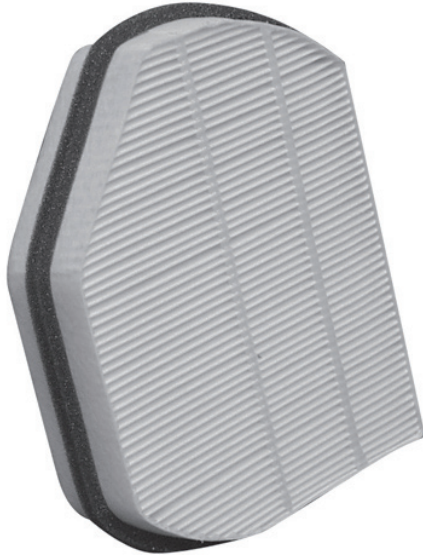
Installation Bulletin | Bulletin d'installation | Boletín de Instalación

CAF1711/CAF7711

08-08

Application: Application: Aplicación:

Chrysler Crossfire | Mercedes-Benz C36, C43, C220 (with 202 chassis/avec châssis 202/con chasis 202), C230, C280 (with 202 chassis/avec châssis 202/con chasis 202), CLK55, CLK230, CLK320, CLK430, SLK32, SLK320



Location of cabin filter:

Under the dash board on the passenger side of the vehicle.

Tools:

Unknown or not required.

To remove existing filter:

1. Remove cover from below instrument panel.
2. Move both retaining clips in direction indicated by arrows and remove cover.
3. Remove filter by dropping down.
4. Reverse procedure to install new filter.