

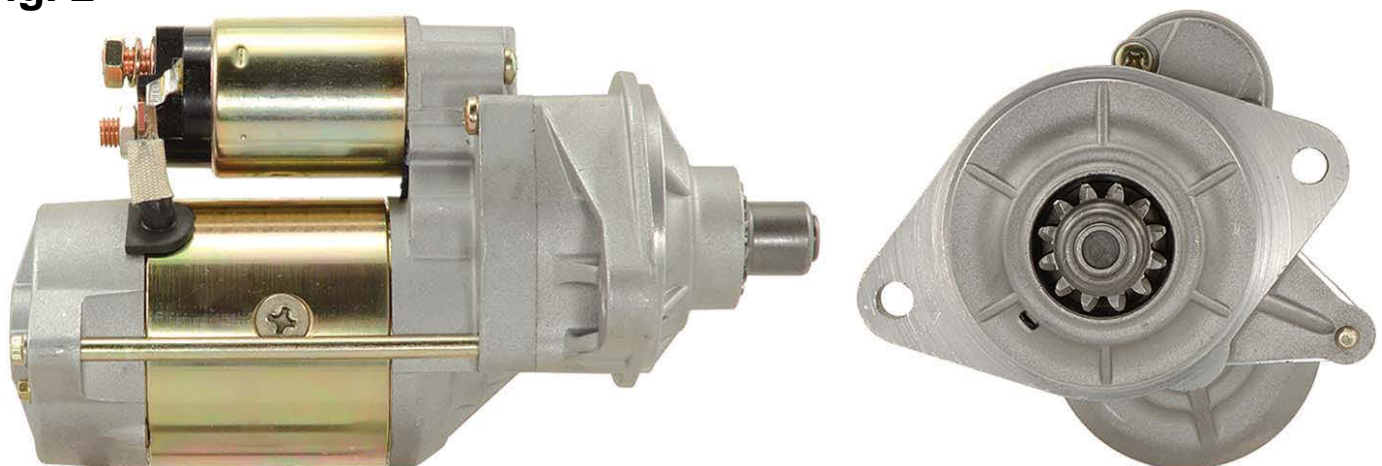
## These units are interchangeable Original Equipment substitution

Although the unit you purchased (*Fig. 1*) may not look exactly like the one removed from the vehicle (*Fig 2*), it will install and operate with only minor modifications necessary. See page 2

**Fig. 1**



**Fig. 2**



When replacing 2C3Z-1102-AA (2 mounting bolt design) with F4TZ-11002A (3 mounting bolt design) the provided bolt 85N005833/W500234-S426 must be installed.

**Caution:** Be sure the third bolt hole is void of dirt, and debris before installing

### Starter Removal

1. Consult owners Manual for Battery disconnect procedures.
2. Remove wiring and mounting bolts noting positions and locations
3. Remove Starter
4. Install and tighten S terminal wire.
5. Install B+ wires locating the anti-rotation tab at the 12 o'clock position and tighten to 80-120 lb-in.

### Starter Installation

1. Install replacement starter and finger tighten mounting bolts in the following order
  - a. Lower bolt
  - b. Upper bolt
  - c. Middle bolt
2. Make sure starter mounting flange is square and properly aligned to the cover plate surface.
3. Tighten mounting bolts to 40-57 lb-ft.

