

# AIR AID®

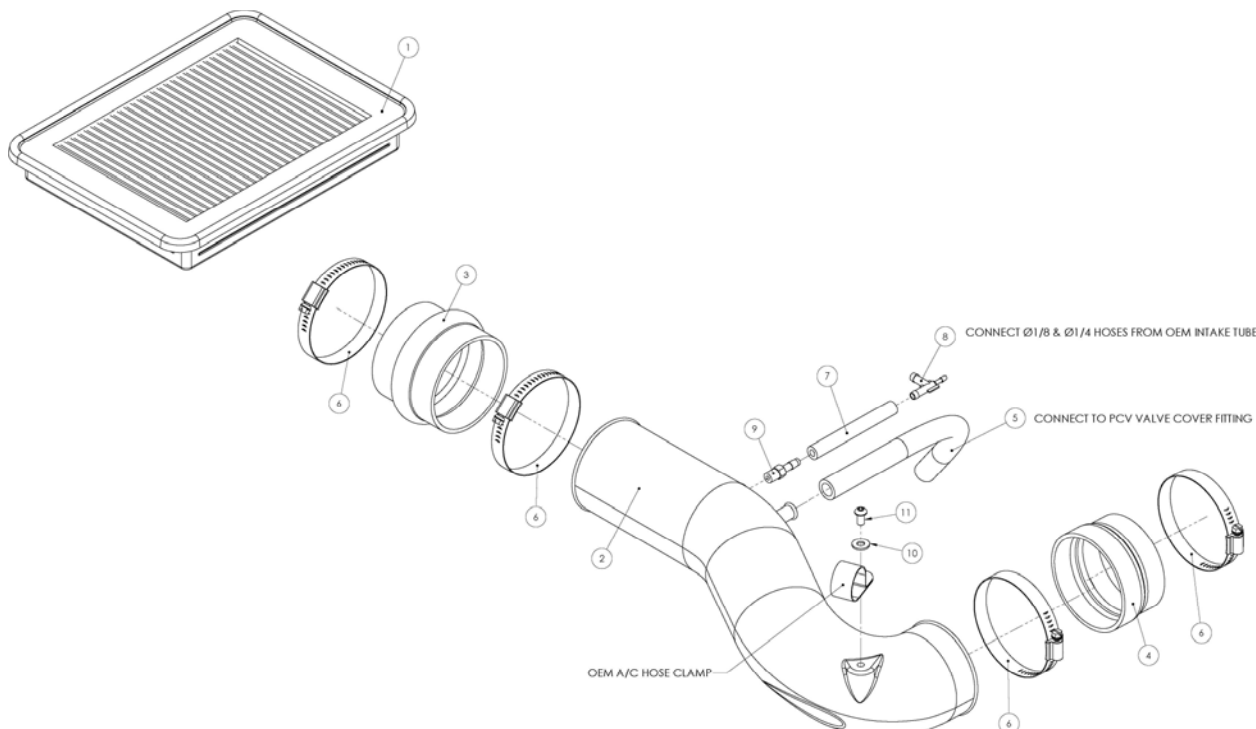
## INTAKE SYSTEMS



### Installation Instructions

#### Part Number 510-761 Jr. Kit

#### 2003-04 Toyota Tundra / Sequoia

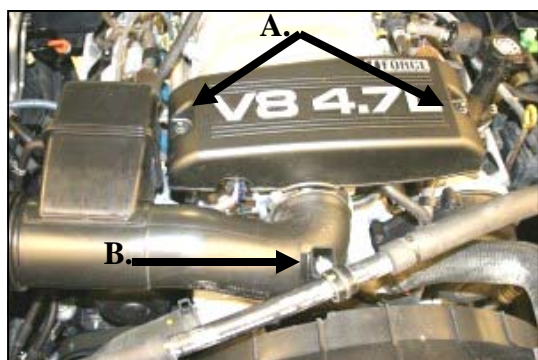


### Packing List:

#1	850-144	Airaid Premium Filter	1
#2	KIT918T	Airaid Intake Tube	1
#3	KITHUMPS11	3 1/2" To 3 3/8" Hump Hos	1
#4	KITRDCR04	3 1/2" To 3 3/8" Reducer	1
#5	KITHOSE01	1/2" x 13" Breather Hose	1
#6	KIT761HP	Hardware & Instructions	1
#7	KITHS52	#52 Hose Clamp	4
#8	KITHOSE03	1/4" x 4" Hose	1
#9	KITFITTING11	1/4" x 1/4" x 1/8" Vacuum Tee	1
#10	KITFITTING10	1/4" Barb x 1/8" NPT Fitting	1
#11	KIT09FWZ019	1/4" Flat Washer	1
#11	KIT15DHC3050	1/4" x 20 Button Head Bolt	1

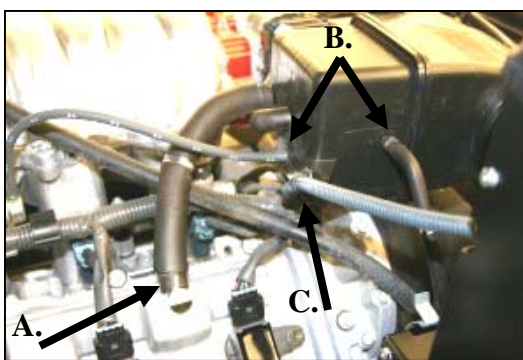
### Tools Required For Installation:

5/32" Allen Wrench  
5/16" & 10mm Socket  
Ratchet & Extension  
7/16" Wrench



#### 1. Disconnect negative battery cable.

A) Remove two 10mm nuts, and remove beauty cover. (Save for reuse). B) Remove the bolt thru the Adel clamp that holds the air conditioning hose.



2. A) Disconnect the breather hose at the valve cover. B) Disconnect 1/8" and 1/4" vacuum lines on back of intake tube. C) Unclip wire harness retainer from back of intake tube.



3. Loosen the hose clamps on the intake tube at the throttle body, and at the airbox.



4. Remove the factory intake tube from the vehicle.



5. Unlatch the 4 clips on the factory airbox, and remove the lid.



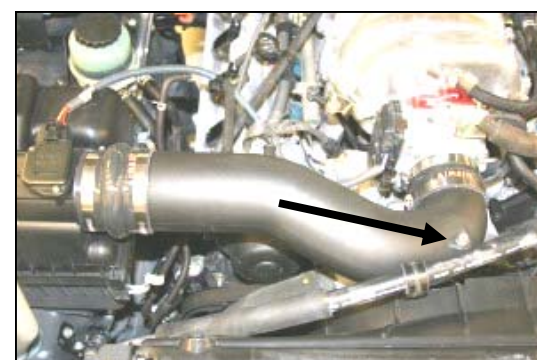
6. Remove the factory air filter, and install the Airaid Premium Filter (#1). Reinstall the factory airbox lid, and latch 4 clips.



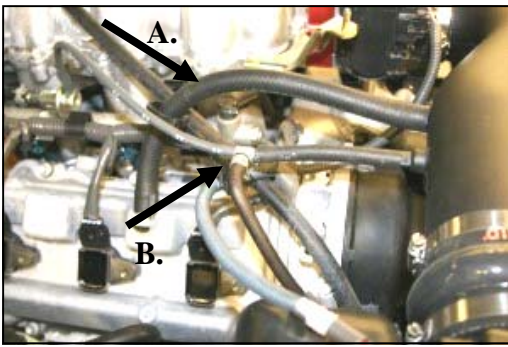
7. Install the hump hose (#3) onto the factory airbox, small end first, with two hose clamps (#6). Next install the reducing coupler (#4), small side first, onto the throttle body with two hose clamps (#6). Leave the clamps loose.



8. Install the 1/4" barb fitting (#9) into the Airaid Modular Intake Tube (#2) as shown. Now slide the 1/4" x 4" hose (#7) onto the barb fitting.



9. Install the MIT into the hump hose first, and then into the reducing coupler. Adjust the MIT snugly against the throttle body, and tighten the 4 hose clamps. Next install the supplied button head bolt (#11) and washer (#10) thru the Adel clamp and into the MIT to hold the air conditioning hose.



10. A) Install the 1/2" x 13" breather hose (#5) from the MIT to the valve cover.  
 B) Install the 1/4" x 1/4" x 1/8" vacuum tee (#8) into the 1/4" x 4" hose (#7) and then to the factory 1/4" and 1/8" vacuum lines, as shown.



11. Reinstall the beauty cover removed in step #1.



**12. Double check your work!**

Make sure there is no foreign material in the intake path. Make sure all clamps, hoses, bolts, nuts, and screws are tight.

**13. Reconnect the negative battery cable!**

*Before!*

*After!*



**Don't Forget Your AIRAID Filter Tune-Up Kit!**



P/N 790-551 Aerosol Spray  
 P/N 790-550 Squeeze Spray